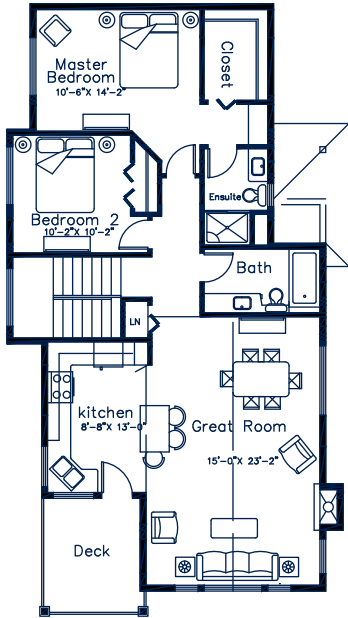




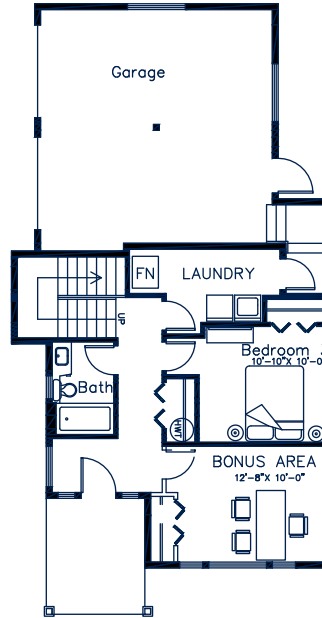
# university heights

## SINGLE UNITS 10-11

Total 1,725 sq.ft. (approx.)  
Ground Floor 654 sq.ft. (approx.)  
Main Floor 1,080 sq.ft. (approx.)



Main Floor 1,080 sq.ft. (approx.)



Ground Floor 654 sq.ft. (approx.)



Front Elevation



LOCATOR

### DISCLAIMER

The developer reserves the right to make necessary changes to the floor plans. All measurements are approximate. Please verify if important.



## EXTERIOR FEATURES...

inspired by nature...

- 30-year durable and care-free designer roofing
- Maintenance-free vinyl siding with craftsman detailing
- Natural Douglas Fir entry doors included on all units
- Rich earth tone colour scheme harmonizes with nature
- Spacious decks offer picturesque views of the harbourfront (*selected models*)
- Fenced lower outdoor living areas connect you with nature
- Professionally-designed landscaping with irrigation systems
- Walking trails tucked away in natural common areas
- Enclosed garages complete with garage door opener
- Retaining walls created from stone extracted from the site
- Careful placement of each home to maximize green space
- Architectural detailing offers a distinguished streetscape

...all create a sense of community

## INTERIOR FEATURES...

warm & welcoming...

- Three timeless colour palettes feature warm earth tones
- High-performance warm wood laminate flooring
- Imported, custom-designed, and hand-set tile entry (*selected models*)
- Rich, sculptured wall-to-wall carpeting
- Hard-wearing, no-wax vinyl flooring
- Custom-designed fireplace surround compliments kitchen
- Classic shaker-style cabinetry in warm wood tones
- Durable laminate countertops with subway tiled backsplash
- Choice of black or white appliance package (upgrade to stainless steel for an additional charge)
- Full-height pantry for ample dry food storage
- Volume ceilings create a sense of spaciousness (*select models*)

... provide a tranquil living space