

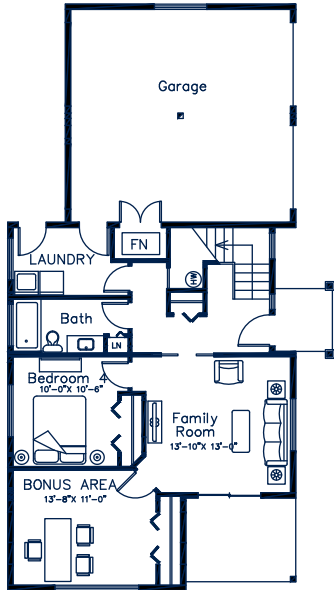


university heights

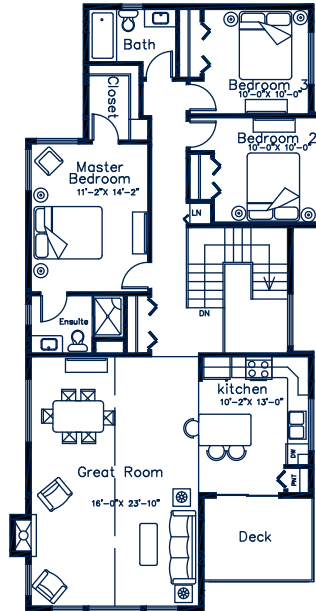
SINGLE UNIT 1

Total 2,170 sq.ft. (approx.)
Ground Floor 850 sq.ft. (approx.)
Main Floor 1,320 sq.ft. (approx.)

Single Unit 1



Ground Floor 850 sq.ft. (approx.)



Main Floor 1,320 sq.ft. (approx.)



Front Elevation



LOCATOR

DISCLAIMER

The developer reserves the right to make necessary changes to the floor plans. All measurements are approximate. Please verify if important.



EXTERIOR FEATURES...

inspired by nature...

- 30-year durable and care-free designer roofing
- Maintenance-free vinyl siding with craftsman detailing
- Natural Douglas Fir entry doors included on all units
- Rich earth tone colour scheme harmonizes with nature
- Spacious decks offer picturesque views of the harbourfront (*selected models*)
- Fenced lower outdoor living areas connect you with nature
- Professionally-designed landscaping with irrigation systems
- Walking trails tucked away in natural common areas
- Enclosed garages complete with garage door opener
- Retaining walls created from stone extracted from the site
- Careful placement of each home to maximize green space
- Architectural detailing offers a distinguished streetscape

...all create a sense of community

INTERIOR FEATURES...

warm & welcoming...

- Three timeless colour palettes feature warm earth tones
- High-performance warm wood laminate flooring
- Imported, custom-designed, and hand-set tile entry (*selected models*)
- Rich, sculptured wall-to-wall carpeting
- Hard-wearing, no-wax vinyl flooring
- Custom-designed fireplace surround compliments kitchen
- Classic shaker-style cabinetry in warm wood tones
- Durable laminate countertops with subway tiled backsplash
- Choice of black or white appliance package (upgrade to stainless steel for an additional charge)
- Full-height pantry for ample dry food storage
- Volume ceilings create a sense of spaciousness (*select models*)

... provide a tranquil living space